



PROFESSIONAL CONSTRUCTION EQUIPMENT



**PRODUCTS
INFORMATION**
2018

NTC

COMPANY INTRODUCTION

Company **NTC STAVEBNÍ TECHNIKA** spol. s r. o. was established in 1991; the main activity is development, production and sale of professional construction machinery.

The NTC products are used in both Czech Republic and abroad. High quality of products and services is ensured by the ISO 9001:2008 quality control system.

Besides of production of construction equipment, NTC is active in the following fields:

- | renting of construction machinery and equipment
- | servicing and repairing of construction machines
- | sale of spare parts
- | sale of new and used construction machines of other brands



Forward vibratory plates VD Elegant	page 4
Forward vibratory plates VD Practic	page 5
Forward vibratory plates VD Easy	page 6
Forward vibratory plates VD Classic	page 7
Reversible vibratory plates VDR	page 8 - 9
Walk-behind vibratory rollers VVV	page 10 - 11
Tandem vibratory rollers VT	page 12 - 13
Floor saws RZ	page 14 - 16
Diamond blades for floor saws	page 17
Vibratory tampers NT	page 18
Tamper shoes for vibratory tampers	page 19
Generators TR, TRT, TRH	page 20 - 21
Hour Counters	page 22

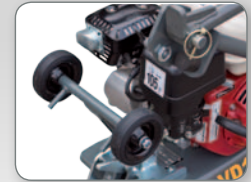
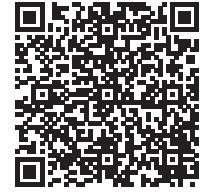
All NTC machines meet all technical and safety requirements of latest european directives and bear the „CE“ marking.



VD ELEGANT



FORWARD VIBRATORY PLATES



**Universal compaction machines suitable for compaction of soil, asphalt and paving.
High-frequency vibration is especially suitable for asphalt compaction.**

- | modern styling
- | integrated water tank
- | large water tank filler
- | folding handle
- | resiliently mounted handle
- | 100 Hz vibrator for smooth ride
- | rounded edges of the compaction plate do not leave tracks on asphalt

STANDARD ACCESSORIES

- | Sprinkling kit

OPTIONS:

- | Soft pad for pavement compaction
- | Wheel kit for easy handling on the jobsite
- | Hour counter
- | Throttle lever on the handle

TYPE	VD 15	VD 18	VD 20	VD 24
Weight kg	85	95	105	115
Compact. plate dims. (WxL) mm	400 x 565	450 x 565	500 x 565	500 x 565
Frequency Hz	100	100	100	100
Centrifugal force kN	15	18	20	24
Max. speed m/min	25	25	25	25
Engine HONDA	GX 160	GX 160	GX 160	GX 160
Fuel	petrol	petrol	petrol	petrol
Net power kW/3600 min ⁻¹	3,6*	3,6*	3,6*	3,6*

* according to SAE J 1349

VD PRACTIC



FORWARD VIBRATORY PLATES



NTC

Universal compaction machines suitable for compaction of soil, asphalt and paving. High-frequency vibration is especially suitable for asphalt compaction.



- | modern styling
- | resiliently mounted handle
- | 100 Hz vibrator for smooth ride
- | rounded edges of the compaction plate do not leave tracks on asphalt

OPTIONS:

- | Soft pad for pavement compaction
- | Wheel kit for easy handling on the jobsite
- | Hour counter
- | Sprinkling kit for asphalt compaction
- | Throttle lever on the handle

TYPE	VD 12P	VD 15P	VD 15P S	VD 15P B	VD 18P	VD 18P S	VD 18P B	VD 20P	VD 20P S	VD 20P B	VD 24P	VD 24P S	VD 24P B
Weight kg	60	85			95			105			115		
Compact. plate dim. (WxL) mm	330 x 460		400 x 565		450 x 565		500 x 565		500 x 565		500 x 565		
Frequency Hz	100	100			100			100			100		
Centrifugal force kN	12	15			18			20			24		
Max. speed m/min	25	25			25			25			25		
Engine	GX 120	GX 160	EX17	B&S 750	GX 160	EX17	B&S 750	GX 160	EX17	B&S 750	GX 160	EX17	B&S 750
Net power kW	2,6 *	3,6 *	4,2 *	3,67 **	3,6 *	4,2 *	3,67 **	3,6 *	4,2 *	3,67 **	3,6 *	4,2 *	3,67 **
RPM/min ⁻¹	3 600	3 600	4 000	3 600	3 600	4 000	3 600	3 600	4 000	3 600	3 600	4 000	3 600
Fuel	petrol	petrol			petrol			petrol			petrol		

* according to SAE J 1349 ** according to SAE J 1940

VD EASY

CE

FORWARD VIBRATORY PLATES



Universal compaction machines suitable for compaction of soil and paving.

- | resiliently mounted handle
- | 100 Hz vibrator for smooth ride
- | rounded edges of the compaction plate do not leave tracks

- OPTIONS:
- | Soft pad for pavement compaction
 - | Wheel kit for easy handling on the jobsite
 - | Hour counter

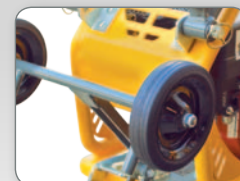
TYPE	VD 15 E	VD 18 E	VD 20 E	VD 24 E
Weight kg	75	85	95	105
Compact. plate dims. (WxL) mm	400 x 565	450 x 565	500 x 565	500 x 565
Frequency Hz	100	100	100	100
Centrifugal force kN	15	18	20	24
Max. speed m/min	25	25	25	25
Engine HONDA	GX 160	GX 160	GX 160	GX 160
Fuel	petrol	petrol	petrol	petrol
Net power kW/3600 min ⁻¹	3,6*	3,6*	3,6*	3,6*

* according to SAE J 1349

VD CLASSIC

CE

FORWARD VIBRATORY PLATES



Universal compaction machines suitable for compaction of soil, asphalt and paving. This line of machines is recommended for rental usage.

- | robust design
- | protective frame
- | resiliently mounted handle
- | best compaction effect in this category

- OPTIONS:
- | Sprinkling kit for asphalt compaction
 - | Soft pad for pavement compaction
 - | Wheel kit for easy handling on the jobsite
 - | Hour counter
 - | Throttle lever on the handle

TYPE	VD 350/16	VD 450/20	VD 450/22
Weight kg	105	115	140
Compact. plate dimens. (WxL) mm	350 x 610	450 x 610	450 x 610
Frequency Hz	81	81	81
Centrifugal force kN	16	20	22
Max. speed m/min	24	24	24
Engine HONDA	GX 120	GX 160	GX 160
Fuel	petrol	petrol	petrol
Net power kW/3600 min ⁻¹	2,6*	3,6*	3,6*

* according to SAE J 1349

NTC

VDR



REVERSIBLE VIBRATORY PLATES



Powerful compaction machines, especially suitable for soil compaction. Alternatively can be used also for compaction of asphalt layers or pavement (particularly for reversible plates up to 250 kg).

- | modern styling
- | high compaction effect
- | protective frame
- | robust design
- | resiliently mounted handle
- | throttle lever integrated in the control bar
- | smooth travel speed control
- | hydraulic travel control system

- | advanced hydraulic system with automatic deaeration and setting
- | versions with electric start are equipped with vibrations resistant gel accumulator

OPTIONS:

- | Sprinkling kit for asphalt compaction (VDR 22/26/26H/32/32H)
- | Soft pad for pavement compaction (VDR 22/26/26H/32/32H)
- | Wheel kit for easy handling on the jobsite (VDR 22/26/26H/32/32H) and 52*
- | Hour counter
- | Engine with cyclone filter
- | Optional electric starting (version VDR 52E/52HE/63E/63HE)
- | Side covers set for operation in trenches (VDR 63/63E/63H/63HE)

* on order



REVERSIBLE VIBRATORY PLATES



TYPE	VDR 22	VDR 26	VDR 26 H	VDR 32	VDR 32 H	VDR 52	VDR 52 E	VDR 52 H	VDR 52 HE	VDR 63	VDR 63E	VDR 63 HE
Weight kg	120	160	170	210	215	340	355	360	370	430	440	460
Compact. plate dims. (WxL) mm	400 x 630	450 x 700	450 x 700	500 x 750	500 x 750	600 x 895	600 x 895	600 x 895	600 x 895	700 x 895	700 x 895	700 x 895
Frequency Hz	100	95	95	90	90	75	75	75	75	74	74	74
Centrifugal force kN	22	26	26	32	32	52	52	52	52	63	63	63
Max. speed m/min	24	22	22	22	22	28	28	28	28	26	26	26
Engine	HONDA	HONDA	HATZ	HONDA	HATZ	HONDA	HONDA	HATZ	HATZ	HONDA	HONDA	HATZ
Type	GX 160	GX 200	1 B 20	GX 200	1 B 20	GX 270	GX 270	1 B 30	1 B 30	GX 390	GX 390	1 B 50
Fuel	petrol	petrol	petrol	petrol	petrol	petrol	petrol	petrol	petrol	petrol	petrol	petrol
Net power kW/3600 min ⁻¹	3,6*	4,1*	3,4*	4,1*	3,4*	6,3*	6,3*	5,0*	5,0*	8,7*	8,7*	7,9*
Electric starting	NO	NO	NO	NO	NO	NO	ANO	NO	YES	NO	YES	YES

* according to SAE J 1349

VVV

WALK-BEHIND VIBRATORY ROLLERS



Walk-behind rollers of the VVV line are suitable for both asphalt and soil compaction. They are often used at construction of sidewalks, parking lots, finishing works, road repairs, etc.

- | robust and reliable design
- | hydrostatic system of propulsion
- | mechanical drive of vibrator with electromagnetic clutch
- | smooth travel speed control
- | all controls at the control bar
- | safety devices – parking brake, „dead man´s control“
- | central lifting eye
- | drums sprinkling system
- | electric starting for diesel engines

OPTIONS:

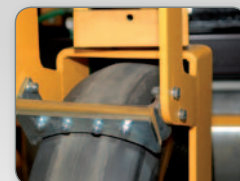
- | Hour counter
- | Steering wheel for easy manipulation (versions 601, 701)
- | Steering wheel scraper and sprinkling for 601, 701 versions.

WALK-BEHIND VIBRATORY ROLLERS



SPECIALTY

Model VVV 600/12HE with elliptic drums
for compaction of drainage groove.



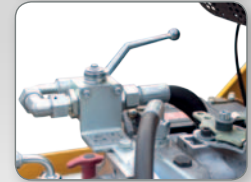
TYPE	VVV 600/12	VVV 600/12 HE	VVV 601/12	VVV 601/12 HE	VVV 700/22	VVV 700/22 HE	VVV 701/22	VVV 701/22 HE
Weight kg	560	580	610	630	875	900	995	1025
Dimensions (LxWxH) mm	2270 x 730 x 1040	2270 x 730 x 1040	2600 x 730 x 1040	2600 x 730 x 1040	2710 x 830 x 1110	2710 x 830 x 1110	2880 x 830 x 1110	2880 x 830 x 1110
Frequency Hz	60	60	60	60	55	55	55	55
Centrifugal force kN	12	12	12	12	22	22	22	22
Speed forward/reverse km/h	0-5/0-2	0-5/0-2	0-5/0-2	0-5/0-2	0-4,7/0-2	0-4,7/0-2	0-4,7/0-2	0-4,7/0-2
Max. gradeability °	20°	20°	20°	20°	20°	20°	20°	20°
Drum width mm	600	600	600	600	700	700	700	700
Engine	HONDA	HATZ	HONDA	HATZ	HONDA	HATZ	HONDA	HATZ
Type	GX 200	1B 20	GX 200	1B 20	GX 270	1 B 30	GX 270	1 B 30
Fuel	petrol	diesel	petrol	diesel	petrol	diesel	petrol	diesel
Net power kW/3600 min ⁻¹	4,1*	3,4*	4,1*	3,4*	6,3*	5,0*	6,3*	5,0*

* according to SAE J 1349

VT

CE

TANDEM VIBRATORY ROLLERS



Tandem rollers of the VT line are used for compaction of asphalt, non-cohesive and cohesive soils and stabilized soils, mainly for constructions of parking lots, industrial areas and road repairs.

- | robust and reliable design
- | hydrostatic system of propulsion, vibration and steering
- | smooth travel speed control, forward and reverse
- | single-lever control
- | pressure sprinkling with electronic adjustment
- | plastic water tank with large filler
- | ergonomic operator's station
- | unobstructed view to drum edges enables compaction close to walls and raised curbs



NTC

TANDEM VIBRATORY ROLLERS

STANDARD ACCESSORIES

- | Hour counter
- | Folding ROPS frame
- | 2 drums vibration; rear drum vibration can be disabled
- | Electric starting
- | Work lights



OPTIONS:

- | Canopy (rain roof)
- | Safety beacon
- | Reversing alarm
- | Box for documents



TYPE	VT 090	VT 090 H	VT 100	VT 100 H
Weight kg	1360	1390	1430	1460
Dimensions (LxWxH) mm	2140 x 990 x 2370	2140 x 990 x 2370	2140 x 1090 x 2370	2140 x 1090 x 2370
Frequency Hz	60	60	60	60
Centrifugal force kN	2 x 14	2 x 14	2 x 16	2 x 16
Travel speed km/h	0–10	0–10	0–10	0–10
Drum width mm	900	900	1000	1000
Engine	HONDA	HATZ	HONDA	HATZ
Type	GX 690	2 G 40	GX 690	2 G 40
Fuel	petrol	diesel	petrol	diesel
Net power kW/3600 min ⁻¹	16,5 *	15,0 *	16,5 *	15,0 *

* according to SAE J 1349

RZ 122, 172, 202



FLOOR SAWS



Floor saws of 122 – 202 line are the top line of NTC floor saws thanks to the construction and features and are designed to everyday professional use, mainly for cutting concrete or bitumen surfaces, for example prior to excavation works, road repairs etc.

- | robust design
- | precise blade guidance
- | good weight distribution
- | increased lifetime of drive belts
- | sprinkling system with tank located over the engine
- | water supply to both sides of the cutting blade
- | cutting depth scale
- | auxiliary springs for easier cutting depth setting

- | cutting depth control arrestment
- | guiding wheel at the arm
- | wheels mounted on sealed bearings
- | handle bar with shock absorbers
- | throttle lever at the control panel
- | emergency stop button - „CENTRAL STOP“

OPTIONS:

- | Hour counter
- | Engine with cyclone filter

TYPE	RZ 122	RZ 172	RZ 202
Weight kg	103	113	116
Dimensions (LxWxH) mm	1120 x 550 x 1060	1120 x 550 x 1060	1120 x 550 x 1060
Cutting depth mm	120/140	170	190/200
Blade diameter mm	350/400	450	500/520
Travel	manual	manual	manual
Fastening hole diameter mm	25,4	25,4	25,4
Max. no-load spindle speed RPM	3400	2800	2500
Water tank capacity l	33	33	33
Engine HONDA	GX 270	GX 390	GX 390
Net power kW/3600 min ⁻¹	6,3 *	8,7 *	8,7 *
Fuel	petrol	petrol	petrol

* according to SAE J 1349

RZ 120, 170, 200

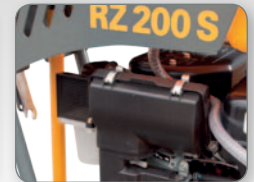


FLOOR SAWS



OPTIONS:

- | Throttle lever at the control panel
- | Hour counter
- | Engine with cyclone filter
(for engine SUBARU and HONDA GX 390)



RZ xx0

HONDA



RZ xx0 S

SUBARU - ROBIN



RZ xx0 B

BRIGS & STRATTON

Floor saws of 120 – 200 line are characterized mainly by simple, robust and stable construction with the possibility of engine type choice. They are designed to everyday professional use, mainly for cutting concrete or bitumen surfaces, for example prior to excavation works, road repairs etc.

- | robust design
- | precise blade guidance
- | good weight distribution
- | sprinkling system with tank located over the engine
- | water supply to both sides of the cutting blade
- | cutting depth scale
- | wheels mounted on sealed bearings
- | cutting depth control arrestment

TYP	RZ 120	RZ 120 S	RZ 170	RZ 170 S	RZ 170 B	RZ 200	RZ 200 S	RZ 200 B
Weight kg	110	103	112	113	111	112	113	111
Dimensions (LxWxH) mm	1060 x 550 x 960		1060 x 550 x 960			1060 x 550 x 960		
Cutting depth mm	120/140		170			190/200		
Blade diameter mm	350 /400		450			500/520		
Travel	manual		manual			manual		
Fastening hole diameter mm	25,4		25,4			25,4		
Max. no-load spindle speed RPM	3400		2800			2500		
Water tank capacity l	20		20			20		
Engine	GX 270	EX 27	GX 390	EX 40	B&S 2100	GX 390	EX 40	B&S 2100
Net power kW	6,3 *	6,6 *	8,7 *	10,3 *	9,93 **	8,7 *	10,3 *	9,93 **
RPM/min ⁻¹	3 600	4 000	3 600	3 600	3 600	3 600	3 600	3 600
Fuel	petrol		petrol			petrol		

* according to SAE J 1349

** according to SAE J1940

RZ 113, 123



FLOOR SAWS



OPTIONS:

- | Throttle lever at the control panel
- | Hour counter



Floor cutters of 113 – 123 line are characterized by compact dimensions, low weight and are designed mainly for smaller scope cutting of concrete or bitumen surfaces.

- | precise blade guidance
- | good weight distribution
- | integrated sprinkling system
- | water supply to both sides of the cutting blade
- | cutting depth scale
- | wheels mounted on sealed bearings
- | cutting depth control arrestment
- | small transport dimensions

TYPE	RZ 113	RZ 123
Weight kg	66	68
Dimensions (LxWxH) mm	925 x 548 x 950	925 x 548 x 950
Cutting depth mm	110	120
Blade diameter mm	300	350
Travel	manual	manual
Fastening hole diameter mm	25,4	25,4
Max. no-load spindle speed RPM	3600	3600
Water tank capacity l	13	13
Engine HONDA	GX 160	GX 200
Fuel	petrol	petrol
Net power kW/3600 min ⁻¹	3,6*	4,1*

* according to SAE J 1349

DIAMOND BLADES

FOR FLOOR SAWS



Wide selection of diamond blades of various diameters for asphalt, concrete or mixed application including types with 3D-positioned diamonds.



Recommended types for NTC floor saws

	TYPE	Blade diameter	Fastening hole dia.	segment	quality
	Asphalt 300	300 mm	25,4 mm	10+2	High Quality
	Asphalt 350	350 mm	25,4 mm	10+2	High Quality
	Asphalt 450	450 mm	25,4 mm	10+2	High Quality
	Asphalt 500	500 mm	25,4 mm	10+2	High Quality
	Asphalt 520	520 mm	25,4 mm	10+2	High Quality
	Concrete 300	300 mm	25,4 mm	10+2	High Quality
	Concrete 350	350 mm	25,4 mm	10+2	High Quality
	Concrete 450	450 mm	25,4 mm	10+2	High Quality
	Concrete 500	500 mm	25,4 mm	10+2	High Quality
	Concrete 520	520 mm	25,4 mm	10+2	High Quality
	Universal 300	300 mm	25,4 mm	10+2	High Quality
	Universal 350	350 mm	25,4 mm	10+2	High Quality

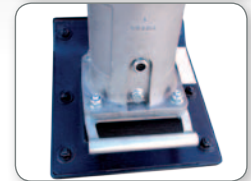
NT

CE

VIBRATORY TAMPERS



NEW



Vibratory tampers are used mainly for compaction in trenches. Due to the high impact force, the tampers are suitable even for compaction of heavy soils, such as clays.

- | high compaction effect
- | protective frame
- | robust design
- | modern 4-stroke engines

OPTIONS:

- | possibility of tamper shoe with soft pad
- | Extra handle for easier manipulation (NT 70)
- | Hour counter

NEW

TYPE	NT 59	NT 65 N	NT 70	NT 70 H
Weight kg	58	64	72	70
Compact. plate dimens. (WxL) mm	230 x 345	285 x 345	285 x 345	285 x 345
Jumping stroke mm	50–85	50–85	50–85	50–85
Compaction force kN	10–11	11–12	14–16	16–18
Blows per minute	600–700	600–700	600–700	600–700
Engine	HONDA	HONDA	HONDA	HATZ
Type	GXR 120	GXR 120	GXR 120	1 B 20
Fuel	petrol	petrol	petrol	diesel
Net power kW/3600 min ⁻¹	2,6*	2,6*	2,6*	3,4*

NTC

TAMPER SHOES

FOR VIBRATORY TAMPERS

NTC STAVEBNÍ TECHNIKA spol. s r. o. is manufacturer of alternative tamper shoes for tampers of various brands. Our tamper shoes are made of quality hard wood and metal cover, their durability is incomparably longer than other shoes made from different, less suitable materials.

AMMANN AVS68; width 285

BOMAG BT 55, 60, 65, 70, 75; width 265

BOMAG BT 60; width 200

BOMAG BT 58, 68; width 285

DELMAG; width 285

DYNAPAC LC 71; width 200

DYNAPAC LT 52; width 265

DYNAPAC LT 62; width 285

DYNAPAC LT 65, 70; width 285

DYNAPAC LT 600, 700, 5000; width 285

MIKASA 200 x 330

MIKASA 265 x 330

MIKASA 285 x 330

MIKASA 330 x 330

NT 59; width 265

NT 65; width 200

NT 59, 65, 70; width 285

RAMMAX DS 68; width 285

STOW VR60-HD; width 285

WACKER BS 50; width 265

WACKER BS 52Y; width 285

WACKER BS 600, 700 old TYPE; width 285

WACKER BS 600, 700 new TYPE; width 285

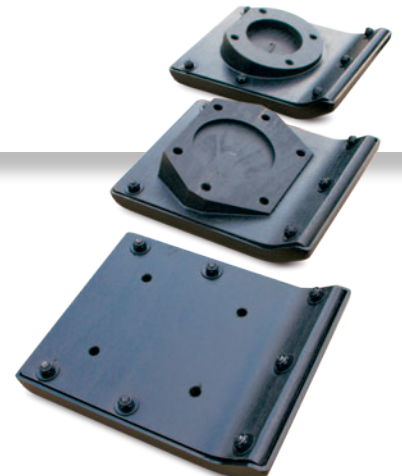
WACKER BS 500; width 285

WACKER BS 60Y; width 285

WACKER BS 60-2i; width 285

WACKER BS 62,65,72,80Y; width 285

WEBER SRX SRV 50,60,65,70,80; width 285



TR, TRT



GENERATORS



Frame-type construction generators serve as a portable source of electricity on construction sites and at other outdoor activities where mains electricity is not at hand.

Type	SINGLE-PHASE GENERATORS TR							THREE-PHASE GENERATORS TRT			
	TR-2,2	TR-2,5	TR-3,3	TR-5E	TR-6E	TR-7E	TR-13E	TRT-5,5	TRT-6,5	TRT-10	TRT-14
Voltage / frequency V / Hz	230 / 50	230 / 50	230 / 50	230 / 50	230 / 50	230 / 50	230 / 50	400 / 230 / 50	400 / 230 / 50	400 / 230 / 50	400 / 230 / 50
Power – 3 phase kVA	-	-	-	-	-	-	-	5,5	7,0	8,0	14
Power – 1 phase kVA	2,2	2,5	3,3	5,0	6,0	7,0	13,0	4,0	4,0	4,0	3 x 4,0
Current – 3 phase A	-	-	-	-	-	-	-	7,9	9,4	14,2	20,0
Current – 1 phase A	10,8	10,8	14,3	21,7	26,0	30,5	56,0	18,0	18,0	17,0	3 x 20,0
No. of sockets	2x 230V	2x 230V	2x 230V	2x 230V	2x 230V	2x 230V	2x 230V	1x 230V/ 1x 400V	1x 230V/ 1x 400V	2x 230V/ 1x 400V	2x 230V/ 1x 400V
Voltage regulation	capacity	capacity / AVR	capacity / AVR	capacity / AVR	capacity	capacity / AVR	capacity / AVR	compound	compound / AVR	compound	compound / AVR
Starting	manual	manual	manual	manual	manual	manual	electric	manual	manual	manual	electric
Engine HONDA	GX 160	GX 160	GX 200	GX 270	GX 390	GX 390	GX 630	GX 270	GX 390	GX 390	GX 630
Net power kW/3600 min ⁻¹	3,6	3,6	4,1	6,3	8,7	8,7	15,5	6,3	8,7	8,7	15,5
Tank capacity l	3,7	3,7	3,7	6	6,5	6,5	11	6	6,5	6,5	11
Weight kg	35	38	40	58	72	75	113	73	76	76	114
Dimensions (L x H x W) mm	500 x 380 x 380	600 x 400 x 450	600 x 400 x 450	740 x 520 x 550	740 x 520 x 550	740 x 520 x 550	1060 x 660 x 600	740 x 520 x 550	740 x 520 x 550	740 x 520 x 550	1060 x 660 x 600

TRH

GENERATORS



Depending on the demand for power quality it is possible to choose either the basic capacity voltage regulation (which is suitable for lights or power tools) or electronic regulation AVR, which is suitable even for powering computers or precise electronic devices.

The range of generators is further extended by several models of engine-driven portable welders TRH.

OPTIONS:

- | Transport wheels
- | Circuit breaker
- | Voltmeter
- | Hour counter
- | Electric start for engines GX 160, GX 270, GX 390
- | Electric fuel tap for engines GX 160, GX 270, GX 390
- | Choke kit for engines GX 160, GX 270, GX 390
- | Automatic START-STOP panel up to 14 kVA (DKG-105) - optional set of electric starting (unless the model has electric starting as a standard) together with electric control of the fuel tap, makes possible to include the generators into a system of backup power supply and to use it as a fully automatic backup source.
- | Welding cable for TRH



Type	GENERATORS WITH WELDERS TRH				
	TRH-170	TRH-200	TRH-171	TRH-221	TRH-300
Voltage / frequency V / Hz	230 / 50	230 / 50	3x 400 / 230 / 50	3x 400 / 230 / 50	3x 400 / 230 / 50
Power – 3 phase kVA	-	-	5,5	6,5	8,0
Power – 1 phase kVA	5,0	7,0	3,5	3,5	3,0
Current – 3 phase A	-	-	7,8	9,2	11,4
Current – 1 phase A	21,0	30,0	15,0	15,0	13,0
No. of sockets	2 x 230V	2 x 230V	1 x 230V / 1 x 400V	1 x 230V / 1 x 400V	1 x 230V / 1 x 400V
Welding current max. A	170 AC	200 AC	170 DC	200 DC	300 DC
Electrode diameter mm	3	4	3	4	6
Engine HONDA	GX 270	GX 390	GX 270	GX 390	GX 630
Net power kW/3600 min ⁻¹	6,3	8,7	6,3	8,7	15,5
Starting	manual	manual	manual	manual	electric
Tank capacity l	6,0	6,5	6,0	6,5	11,0
Weight kg	73	82	82	86	126
Dimensions (L x H x W) mm	720 x 520 x 550	860 x 530 x 550	860 x 530 x 550	860 x 530 x 550	1060 x 660 x 600

HOUR COUNTER



- Enables checking of service intervals of your machine – change of oil, filters, spark plugs, adjusting etc.
- Easy installation

NTC

Suitable for all equipments powered by combustion engines such as power generators, light compaction equipment (vibratory plates, tampers, rollers ...), boats, motorcycles, snowmobiles etc.

Hour counter for petrol engines

- hour counter is activated by signal from spark plug cable

Hour counter for diesel engines

- hour counter is activated from diesel engine electricity generator

Universal hours counter for compaction equipment

- hour counter is activated by vibrations





Forward vibratory plates
VD Practic



Forward vibratory plates
VD Easy



Forward vibratory plates
VD Classic



Forward vibratory plates
VD Elegant



Tandem vibratory rollers VT



Walk-behind vibratory rollers VW



Reversible vibratory plates
VDR



Floor saws RZ

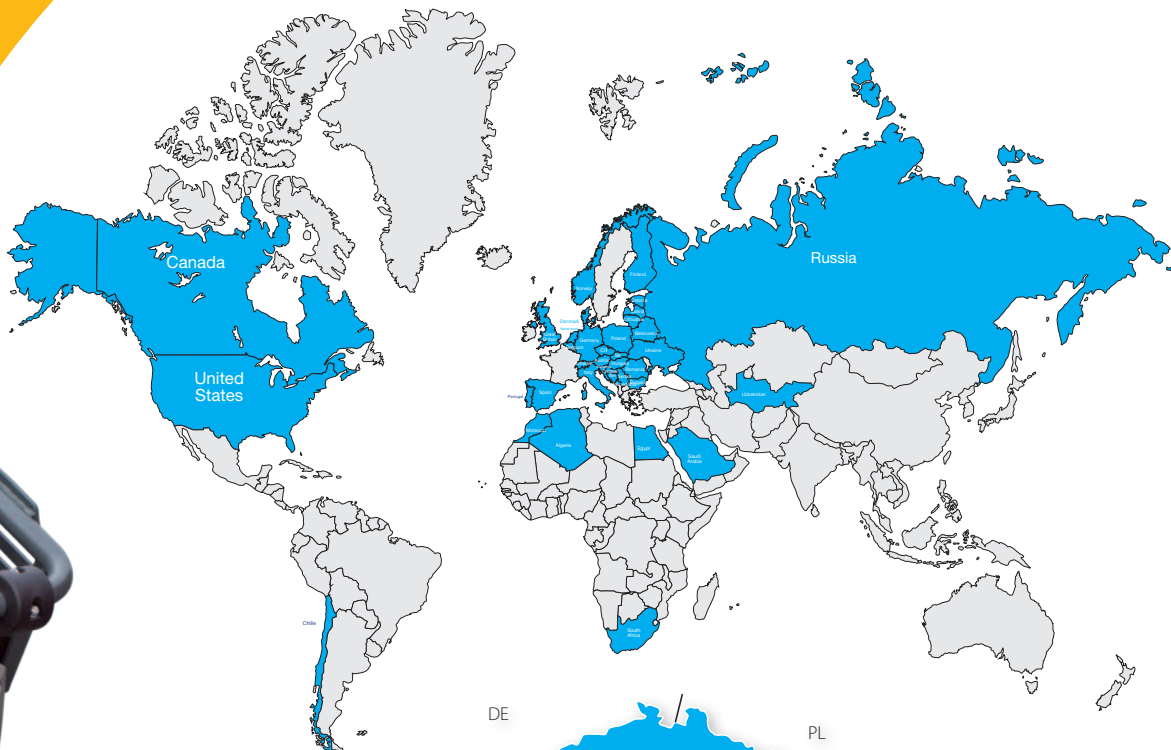


Vibratory tampers NT



Generators TR, TRT, TRH

PROFESSIONAL CONSTRUCTION EQUIPMENT



**The manufacturer is certified
according to ISO 9001:2008**



NTC STAVEBNÍ TECHNIKA spol. s r. o.

Jiřínková 120
552 03 Česká Skalice
Czech Republic

Tel.: +420 491 401 650
Fax: +420 491 401 609
E-mail: sales@ntc.cz

Your dealer:

more information at www.ntc.cz  