


X-Power TBi XP 363-S/-L

Typ / Type	Art. Nummer / Part no.
TBi XP 363-L	Euro, 50° gebogen / bent 145P32A0_0*
TBi XP 363-S	Euro, 45° gebogen / bent 145P3290_0*
TBi XP 363-L	Euro, 50° gebogen / bent 145P3LA0_0*
TBi XP 363-S	Euro, 45° gebogen / bent 145P3L90_0*

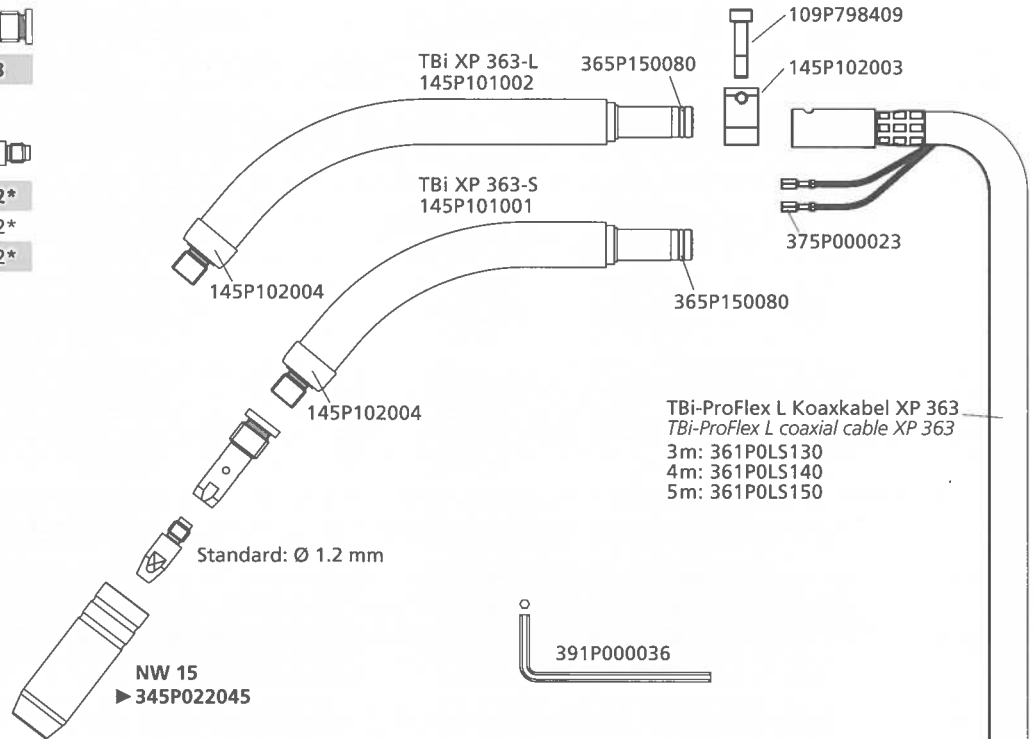
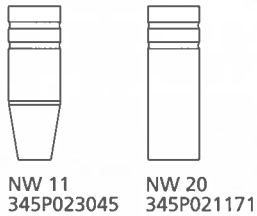
Kühlart / Cooling method	Belastbarkeit [A] / Rating [A]		Einschaltdauer / Duty cycle (10 min.)	Draht-Ø / Wire diam. [mm]
	M21	CO2		
Gas / gas	320	340	60 %	1.2 - 1.6

Gasdüsenenträger / Nozzle support 

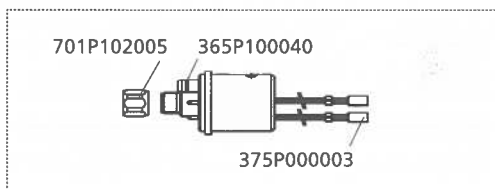
► M8 / L= 43 mm **145P102008**

Stromdüsen / Contact tips 

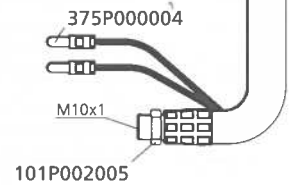
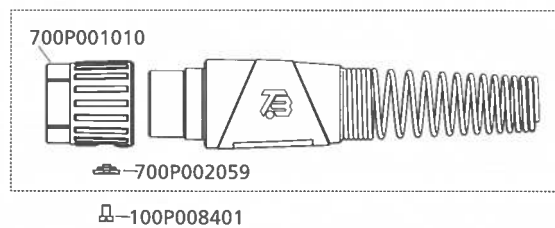
► M8x30, ECu **340P__1262***
M8x30, CuCrZr **340P__3262***
M8x30 Alu, Ecu **341P__1262***



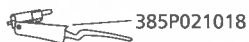
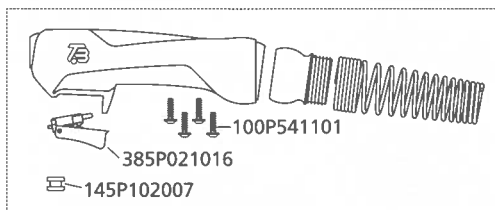
ESG kpl. / ESG cpl.
701P001048



Knickschutz ,Expert' kpl. / Cable support ,Expert' cpl.
700P001064



Griffschale ,Expert' kpl. / Handle kit ,Expert' cpl.
380P230005

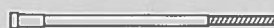


► Standard / Standard

*Bitte an Leerstelle entsprechende Angaben für Brennerlänge oder Drahtdurchmesser einsetzen, z.B. 08 für 0.8 mm oder 3 für 3 m.
At the blank, please insert suitable information for torch length or wire diameter, e.g. 08 for 0.8 mm or 3 for 3 m.

Drahtführungen / Wire guides

Drahtführungsspirale für Stahldraht
Liner for steel wire



	m Ø 0.8 - 1.0	Ø 1.0 - 1.2	Ø 1.2 - 1.6
blau / blue	rot / red	gelb / yellow	
3 324P154534	324P204534	► 324P254534	
4 324P154544	324P204544	► 324P254544	
5 324P154554	324P204554	► 324P254554	