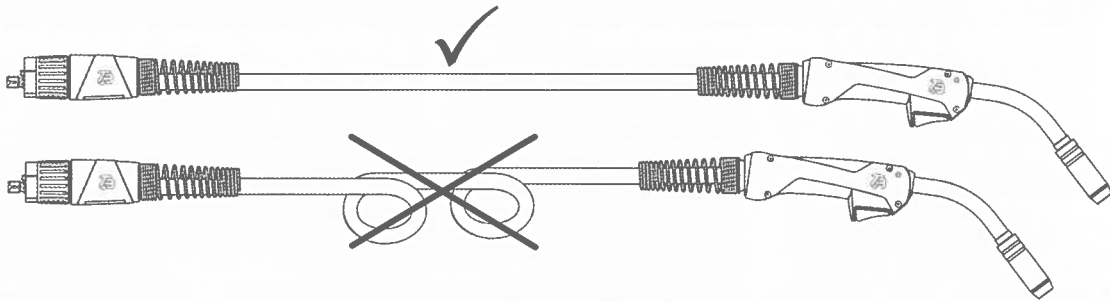




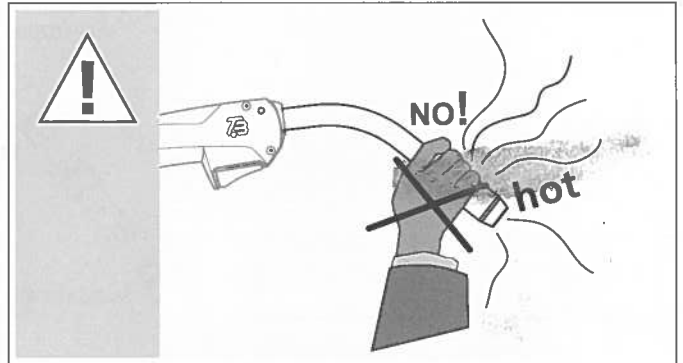
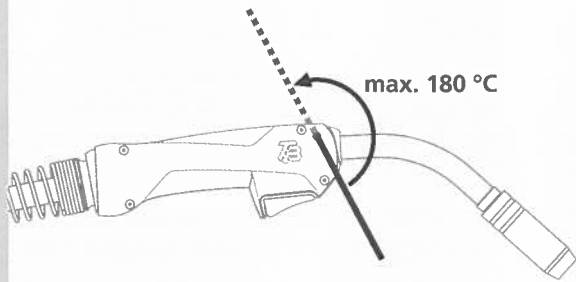
Achtung: Gefahr eines elektrischen Schlags. Vor Wartungs- und Einstellarbeiten am Brenner immer die Stromversorgung zur Schweißstromquelle unterbrechen.

Warning: Risk of electric shock! Always disconnect the welding machine from the line power before maintenance, inspection, or exchange of torch neck.

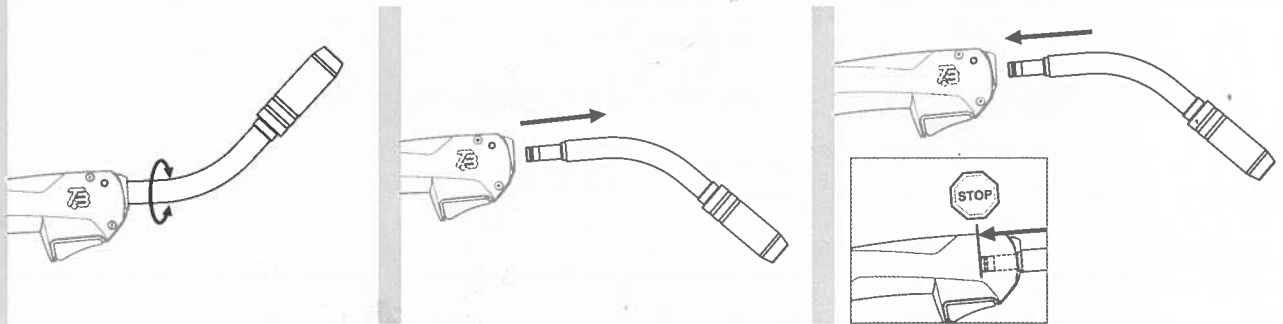
1.



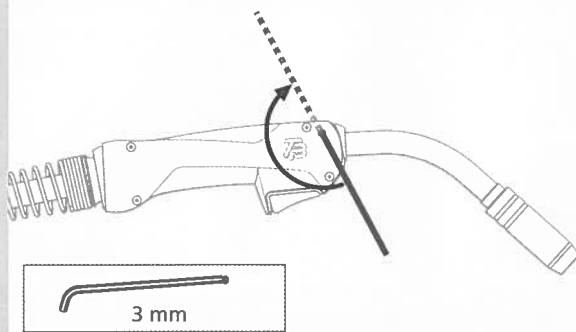
2.



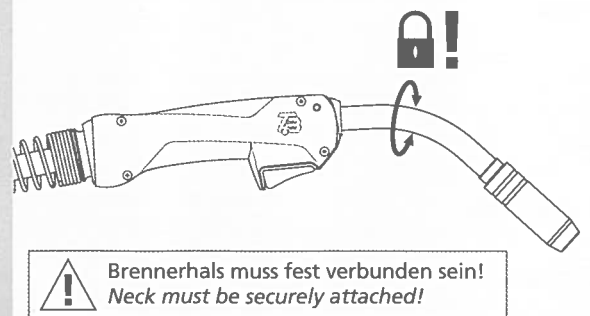
3.



4.



5.



! Brennerhals muss fest verbunden sein!
Neck must be securely attached!